



#KömmerringForTomorrow

profine GmbH
Kömmerring

www.koemmerling.com.au



Kömmerring WarmCore

Aluminium, Smarter From The Core

Comfort on the Inside, Style on the Outside

Where thermal efficiency
meets architectural elegance

Every day, manufacturers and installers face a familiar challenge: delivering high-performance, energy-efficient systems without compromising on appearance, production speed, or cost. Conventional thermally broken aluminium offers a sleek, modern look, but often lacks the energy efficiency that today's projects demand. On the other hand, uPVC delivers outstanding thermal performance and ease of fabrication but may not suit every architectural style.

WarmCore bridges that gap – a thermally broken aluminium solution with a warm, insulated core at its heart. It combines the best of both worlds: the energy performance and fabrication efficiency professionals rely on, with the contemporary aesthetics and structural strength that homeowners and architects expect.

Register
your interest



A system that brings the best of both worlds together. The style of aluminium with the warmth of uPVC.

With a high-quality, multi chambered thermal break at its core and a durable aluminium exterior, WarmCore delivers exceptional structural stability, impressive insulation values, a high recycled material content, and a widerange of design possibilities.

Built to Last. Designed to Return.

Every day, Kömmerling applies its expertise to develop sustainable systems using high-quality, fully recyclable materials. WarmCore is no exception—crafted with durability in mind and aligned with circular economy principles, it supports longterm performance while reducing environmental impact. From manufacturing powered by renewable energy to products designed for easy disassembly and material recovery, WarmCore reflects our commitment to sustainability at every stage of its lifecycle.

Beyond uPVC: Welcome to a New Era of Thermal Performance



ALUMINIUM OUTER SHELL

The robust external aluminium structure delivers architectural strength, structural stability, and long-term weather resistance. It allows for sleek sightlines and modern aesthetics while standing up to harsh Australian conditions.

GLAZING OPTIONS

Supports a wide range of glazing thicknesses to meet various acoustic, thermal, and security requirements. WarmCore accommodates double and triple glazing for maximum efficiency and comfort.

MULTI CHAMBERED THERMAL BREAK

At the core of the profile lies an advanced multi-chambered thermal break, designed to significantly reduce thermal bridging. This ensures excellent insulation and improved energy efficiency compared to conventional aluminium frames.

MULTI POINT LOCKING SECURITY

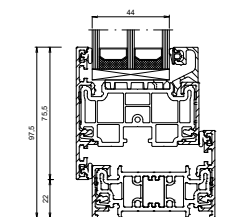
WarmCore systems are equipped with advanced European multi-point locking mechanisms that engage at several points along the sash, not just at the handle. This provides enhanced protection against forced entry and ensures a tight, consistent seal every time the window or door is closed.

**Register
your interest**



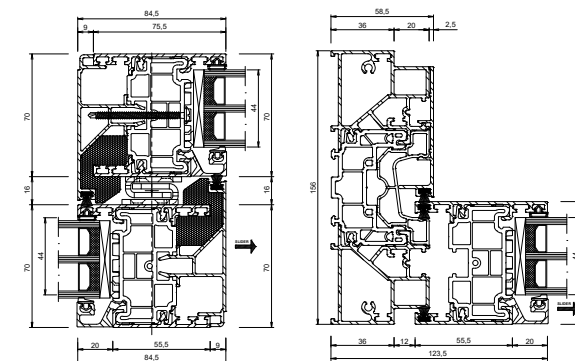
WARMCORE SKETCHES AND TECHNICAL DRAWINGS

Awning Window

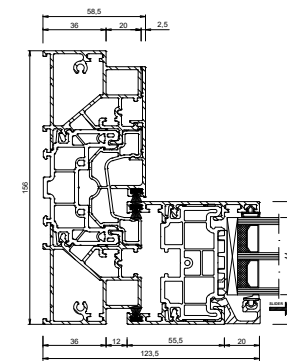


Outer Frame

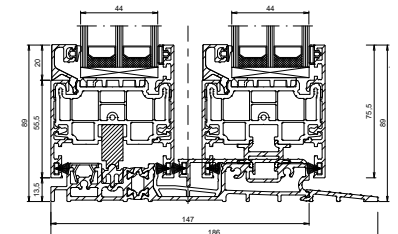
Patio Door



Interlock

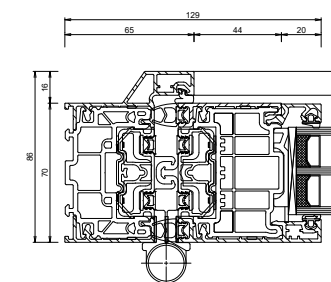


Jamb

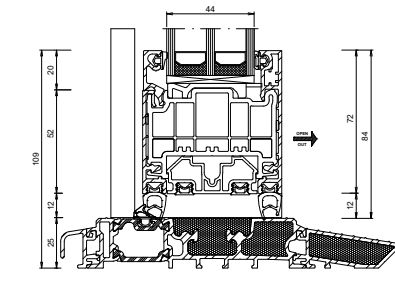


Threshold

Bi-Fold Door



Jamb



Low Threshold

Thermally Broken Aluminium with a WarmCore



SUSTAINABLE & RECYCLABLE

Sustainability is built into every WarmCore system. Manufactured using high recycled content and fully recyclable materials, it supports a circular approach to construction. Combined with energy-efficient performance and a long product lifespan, WarmCore contributes to environmentally responsible building practices.



FLEXIBLE DESIGN OPTIONS

WarmCore is available in a wide range of opening styles—including tilt and turn, sliding, bifold, hinged, and fixed systems. With multiple size options, frame depths, colours, and finishes, it easily adapts to residential renovations, new builds, and commercial applications. Its modularity gives fabricators and designers maximum freedom to create custom solutions.



ENERGY SAVINGS

WarmCore's multi-chambered thermal break system is engineered to deliver exceptional energy efficiency. It reduces heat transfer through the frame, helping Australian homes stay comfortable year-round. Whether it's the height of summer or a cool winter morning, WarmCore supports the design of 7-Star and beyond homes—minimising energy use and lowering household power bills.



WEATHER RESISTANT

Engineered with a tough aluminium exterior and corrosion-resistant components, WarmCore is built for longevity. Its structural integrity ensures it can handle demanding applications while maintaining smooth operation over time. Low maintenance requirements make it ideal for busy homes and high-traffic areas.



SAFETY & SECURITY

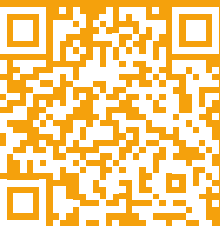
WarmCore offers peace of mind through its robust design and advanced locking options. Reinforced frames and multi-point locking systems enhance resistance to forced entry, while maintaining compliance with Australian safety standards. It's a smart, secure choice for modern living.



SOUND INSULATION

The combination of innovative seals and compatible acoustic glazing makes WarmCore a system that brings tranquility to your home. For a significantly higher quality of life and comfort at home.

Register
your interest



Built to last. Built to be reused.

At Kömmerling, we strive to be a reliable and valued partner. Our priority is to offer sustainable, high-quality solutions that meet the needs of both private and professional customers. Customer focus, reliability, quality, and sustainability are at the heart of everything we do.

WarmCore profiles are made from 100% recycled uPVC, which is fully recycled in-house by Kömmerling. This enables a reduction in CO₂ emissions of up to 90% for uPVC components alone.

Kömmerling guarantees the highest quality recycled materials, contributing to a more sustainable future. Kömmerling means saving energy and living better, for generations to come.



Endless Colour Possibilities

One of the standout benefits of WarmCore's aluminium outer surface is its compatibility with an extensive array of powder coating colours and textures. Thanks to this, WarmCore can fully leverage the complete ranges offered by both Dulux and Interpon, giving architects and homeowners access to a virtually limitless palette.

WarmCore's external aluminium profiles are powder-coated before being bonded to the internal core. This smart manufacturing approach allows for dual-colour configurations, where the exterior and interior profiles can be finished in different colours. Whether you're aiming for a bold façade and a subtle interior, or vice versa, WarmCore makes it possible to tailor every detail to your vision.

Register
your interest



Dual Colour Flexibility – The Best of Both Worlds

WarmCore enables the ability to have different colours inside and out



Inside



Outside

Collaborative & Engaging

Let's Shape The Future Together. Expand Your Offer. Grow Your Business.

ONE PRODUCTION LINE, TWO SYSTEMS

Whether your current operation focuses on uPVC or aluminium windows, WarmCore offers the best of both worlds—without requiring major changes to your existing fabrication setup. Its innovative design is engineered for compatibility, allowing fabricators to transition smoothly and efficiently.

WarmCore supports both welded and mechanical uPVC joints, making it easy to integrate into workflows for uPVC as well as aluminium window systems. This flexibility means you can expand your product offering and meet evolving market demands with minimal disruption.

PREMIUM SYSTEM, uPVC TREATMENT

Are you already working with seamless welding machines? Then you can process the new WarmCore profiles on your existing line. These thermally broken aluminium profiles are faster to produce than 100% aluminium profiles, thanks to less manual labor and shorter cycle times. In addition, the corners are welded, without the need for manual rework. The result: a premium product that adds more value to you as a manufacturer.

READY TO GROW WITH US?

Thanks to its unique combination of uPVC and aluminium, its specific processing, and its distinctive advantages, WarmCore allows you to add a new yet complementary system to your range. This gives you the opportunity to offer your customers better performance and strengthen your positioning, and your power of differentiation, as a manufacturer.

This is not a system intended to replace existing solutions. It is a high-end system, with its own advantages and unique features. Different and better than anything available to date.

Register
your interest



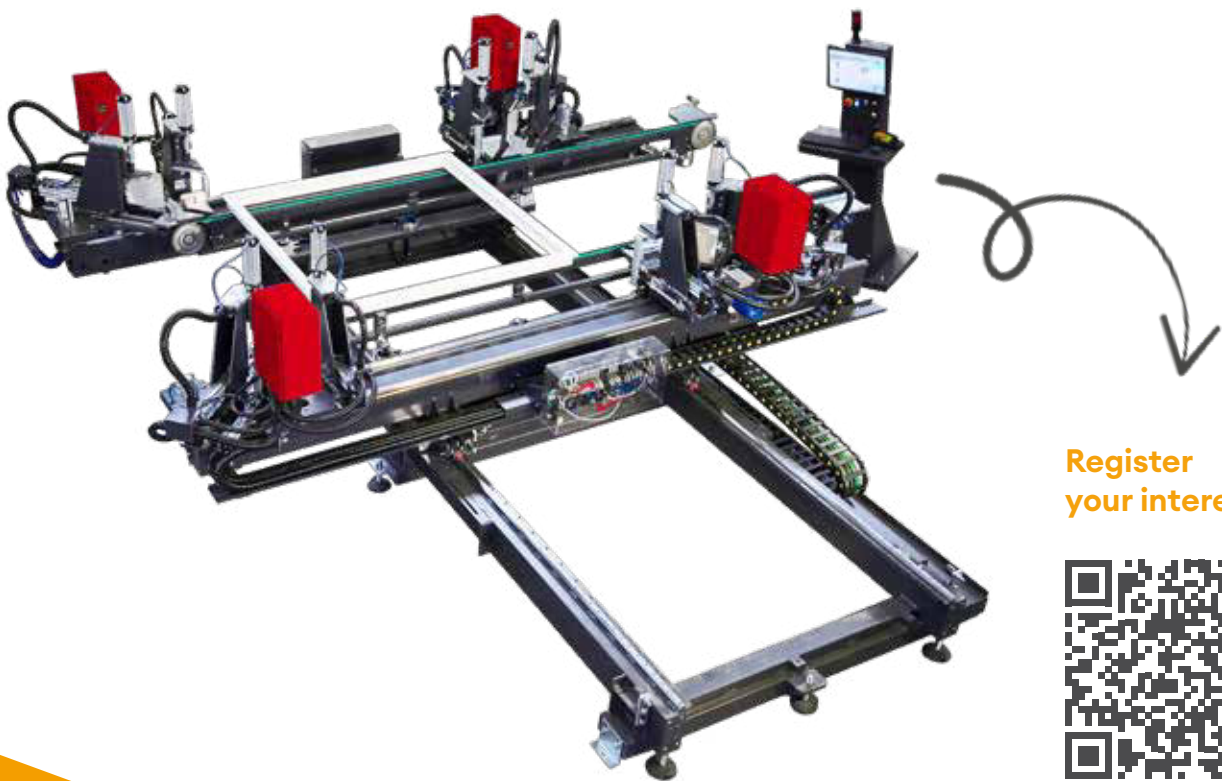
Pemium Profile – Premium Advantage

WarmCore seamlessly blends the strengths of aluminium with the thermal efficiency of uPVC, creating a window system that delivers substance and style. The slim aluminium profile exudes a premium, minimalist aesthetic that aligns perfectly with contemporary Australian architecture.

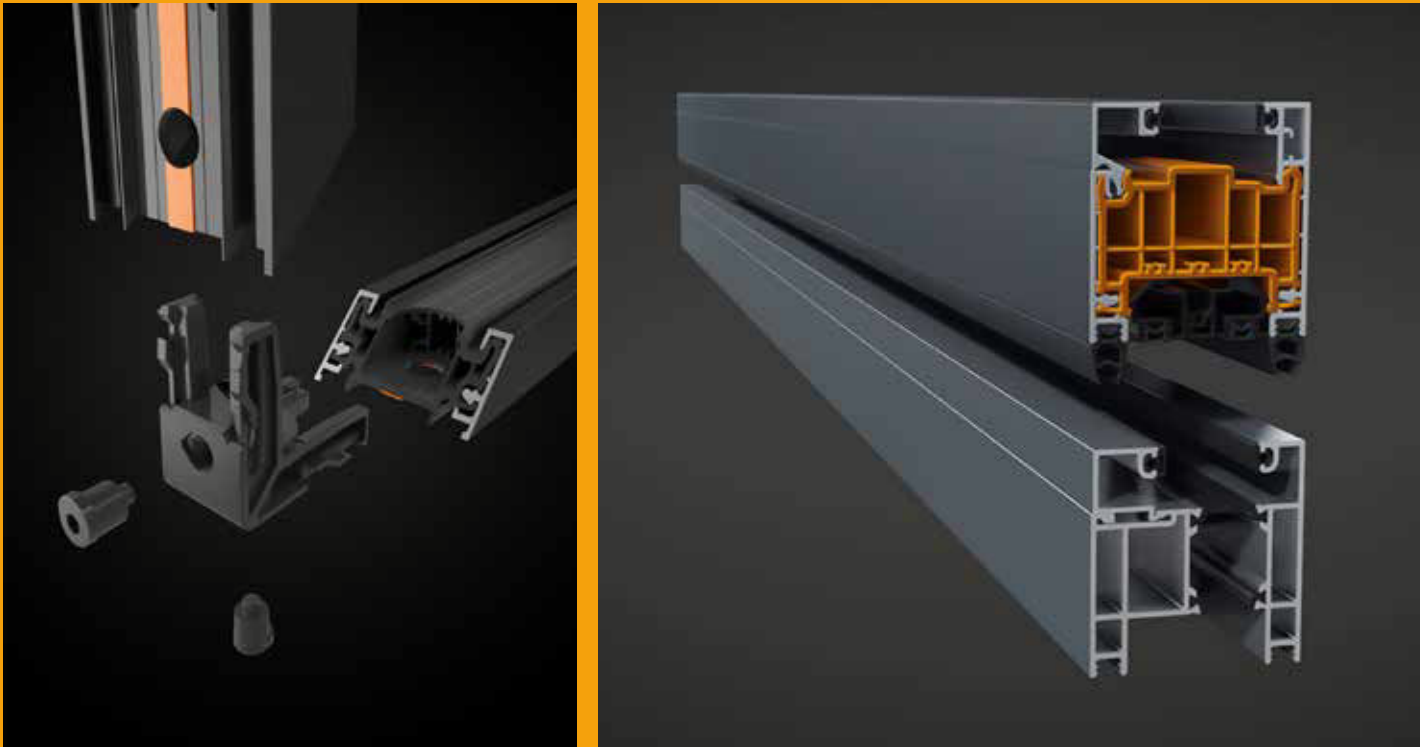
Beneath the surface, the uPVC core provides exceptional thermal insulation, ensuring superior efficiency and comfort. WarmCore isn't just a window, it's an architectural glazing solution that performs beautifully in Australia's diverse climate.

ADDED VALUE FOR YOU AND YOUR CUSTOMERS

Faster, more automated production creates value. You benefit from a time saving of 20% to 40% compared to the manufacture of aluminium windows.



Register
your interest



Up to 40 % faster

WarmCore is designed to adapt to your preferred fabrication method, offering the choice between mechanical corner cleats or integration with automated equipment such as Graf Synergy machines. The flexibility empowers fabricators to optimize efficiency without compromising on quality.

Whether you're working with more traditional assembly techniques or investing in high speed automation, WarmCore supports your workflow, making it easier to scale production and meet demand with precision and consistency.

WarmCore incorporates European uPVC hardware systems known for their ease of installation, robust security and exceptional weather sealing. These systems are engineered for efficiency, allowing fabricators to streamline assembly while delivering a product that performs at the highest level.

Key benefits include:

- > **Faster Installation**
- > **Enhanced Security**
- > **Improved weather tightness**

By combining advanced European hardware, WarmCore ensures every window is built for durability, comfort, and long term performance.



Why WarmCore?

Understanding the Difference – and Why WarmCore Offers the Best of Both Worlds

100% recyclable uPVC core and Aluminum exterior

Made of Recycled uPVC

Designed for a circular lifecycle

Reducing waste for a cleaner future

- › Thermally broken aluminium + Thermal uPVC core = advanced performance
- › More energy efficient than traditional thermally broken aluminium
- › Low maintenance, corrosion-free and long-lasting
- › Suits new builds, retrofits, and renovations
- › Optional flush sash designs for a sleek look

Register your interest



	uPVC	Alu	WarmCore
Thermal Insulation	✓		✓
Aestics & Applications		✓	✓
Corrossion Resistance	✓		✓
Moisture Barrier	✓		✓
Sustainable & Recycling	✓		✓
European Multi Point Locking Mechanisms	✓	✓	✓
Perception of value	★★★★	★★	★★★★★